

SUPERIOR WASTE SCRAP METAL LIST

TABLE OF CONTENTS

Copper.....	3
Brass.....	5
Radiation.....	7
Aluminum.....	9
Stainless.....	13
Wire.....	14
Misc.....	16
Motors.....	18

COPPER

1. BARE COP WIRE (bare copper wire)

- a. Clean copper wire by itself, without any insulation. Shiny, like a penny.



2. BARE COP FLASH (bare copper flashing)

- a. Clean copper roof flashing by itself, shiny like a penny.



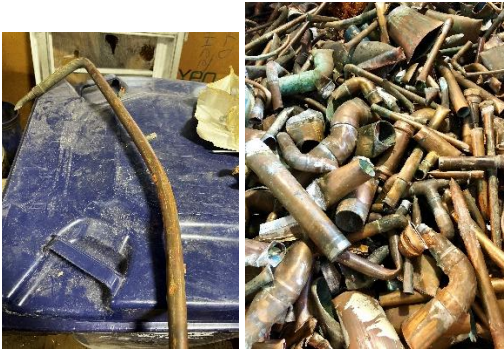
3. #1 COP (#1 copper)

- a. Clean, unalloyed copper that is sparkling in appearance, and is free of any fittings, insulation, paint, solder or tap.



4. #2 COP (#2 copper)

- a. Lower grade copper that still has fittings, insulation, paint, solder, tape, dirt and debris



5. LIGHT COP (light copper)

- a. Miscellaneous unalloyed copper scraps with a minimum of 88% copper content. Includes, but not limited to sheet copper, gutters, downspouts, kettles, boilers, etc.



6. LEADED LIGHT COP (Leaded light copper)

- a. Lead melted onto light copper. Appearance is silverish in color.



7. DIRTY LIGHT COP (Dirty light copper)

- a. Light copper with attached miscellaneous unalloyed wires, pipes, other solid metals, solder, paint or any form of coating. Attached shingles will lower the price.



8. COPPER SHEET WITH ADHESIVE BACK

- a. Thin copper foil with adhesive backing with some plastic (call mills or price)



9. COPPER TURNINGS

- a. Small shavings, chips or scraps of copper as a byproduct of machining that are shiny in appearance and soft, lightweight, nonmagnetic and contain no contaminants.



BRASS

10. CLEAN BRASS

- a. Brass scrap free of contaminants such as paints, solder, and other metal fixtures.



11. DIRTY BRASS

- a. Brass scrap with contaminants.



12. COMP (Composite, bronze)

- a. Bronze scrap



13. BRASS PIPE

- a. Brass pipes used for plumbing.



14. CLEAN SHELLS

- a. Clean, spent, brass bullet casings.



15. MIXED SHELLS

- a. Spent brass shell casings mixed with silver coated/other shelling casings. No aluminum or steel casing.



16. BRASS TURNINGS

- a. Small shavings, chips or scraps of brass as a byproduct of machining that are shiny in appearance and soft, lightweight, nonmagnetic and contain no contaminants.



17. BRONZE TURNINGS

- a. Small shavings, chips or scraps of bronze as a byproduct of machining that are shiny in appearance and soft, lightweight, nonmagnetic and contain no contaminants.



RADIATION

18. STEEL/CU ENDS REFINERY (Steel/copper radiator ends)

- a. Radiator ends where the connection to pipes are made, containing steel or copper, without extra fittings such as valves or bleeders.



19. AL/COP RAD CLEAN (clean aluminum/copper radiators)

- a. Heat exchangers, made of copper tubes surrounded by aluminum fins. Clean radiators have no extra fittings, attachments, steel ends, or dirt/grime



20. AL/COP RAD DIRTY (dirty aluminum/copper radiators)

- a. Radiators with extra fittings attached and/or some dirt and grime with steel ends still attached.



21. AL/COP RAD XTRA DIRTY (Extremely dirty aluminum/copper radiators)

- a. Vehicles radiators with lots of extra fittings attached and/or covered in grime and dirt with steel ends still attached.



ALUMINUM

22. CLEAN EXT ALUM (Clean aluminum extrusions)

- a. Aluminum extrusions without extra fittings, dirt/grime, puddy or screws and steel attached.



23. SHEET ALUM 5% MAX (Sheet aluminum 5% max iron)

- a. Bales of aluminum cannot have over 5% iron content. Thus, any sheet aluminum cannot have higher than a 5% iron content, nor any dirt, grim or extra attachments.



24. B-PAK AL (aluminum cans)

- a. Aluminum cans used for beverages, free of excess dirt, liquid, other scrap metals, foil and packaging.



25. IRONY ALUM (Irony aluminum)

- a. Mixed scrap metal composed primarily of aluminum, with a smaller percentage of iron and or non-metallic elements, generally 70% al and no more than 30% iron or other materials.



26. NEW BARE ALUM (New bare aluminum)

- a. Aluminium metal in flat sheets, shiny in appearance and without extra fittings, dirt, or anodized (colored by electrochemical process).



27. CLEAN EC WIRE (clean aluminum electrical conductor wire)

- a. Aluminum wire without insulation, casing or containing steel lining.



28. CAST ALUM 5% MAX (Cast aluminium 5% iron)

- a. Casted aluminium with no more than 5% iron content, such as baking pans, skillets, and other kitchen ware, furniture and motor parts.



29. ALUM SIDING CLEAN (Clean aluminum siding)

- a. Aluminum siding with minimum dirt/grime and other fixtures.



30. RIMS (auto tire rims)

- a. Tire rims without tires.



31. CHROME RIMS

- a. Rims with a chrome coating.



32. 6061 TRUCKS RIMS (Truck rims)

- a. Trucks rims made from 6061 aluminum alloy, usually have a clean, polished or matte finish in a variety of designs.



33. BROKEN RIMS

- a. Rims that are cracked, dented, in pieces or generally broken.



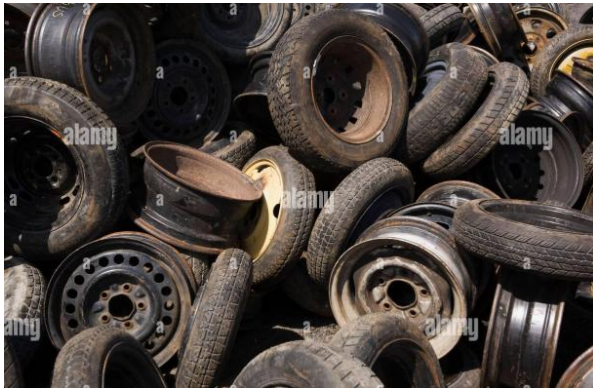
34. UBC CLEAN (Clean beverage cans)

- a. Brand new aluminum cans



35. RIMS WITH TIRES

- a. Rims with tires



36. AL TURNINGS (aluminum turnings)

- a. Small shavings, chips or scraps of aluminum as a byproduct of machining aluminum that are shiny in appearance and soft, lightweight, nonmagnetic and contain no contaminants.



STAINLESS

37. DIRTY SS (Dirty stainless steel, 300 series stainless steel, 18/8 SS)

- a. Stainless steel, such as sinks, kitchen utensils, etc with dirt, grime, extra fixtures such as drains or pipes on sinks.



38. CLEAN SS (Clean stainless steel, 300 series stainless steel, 18/8 SS)

- a. Stainless steel without dirt/grime, excessively tarnished, or extra fixtures



39. 18/8 STAINLESS STEEL TURNINGS (TYPE 304 SS)

- a. Small shavings, chips or scraps of 18/8 stainless steel produced as a byproduct of the machining process.



40. 400 SERIES MAGNETIC STAINLESS-STEEL TURNINGS

- a. Small shavings, chips or scrap of 400 series stainless steel produced as a byproduct of the machining process that are slightly magnetic.



41. 300 SERIES STAINLESS TURNINGS

- a. Small shavings, chips or scraps of 300 series stainless steel produced as a byproduct of the machining process which are shiny in appearance and non magnetic.



WIRE

42. ALUM INS WIRE (Aluminum insulation wire)

- a. EC wire with insulation, no steel.



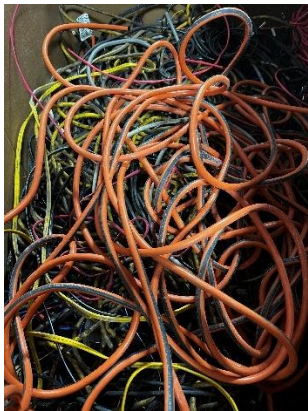
43. CHRISTMAS LIGHTS

- a. Christmas lights without plugs.



44. 35-40% #2 CORD (Extension cords)

- a. Primary extension cords, without plugs.



45. 45-50% #2 TELE/COMM (Telecom wire)

- a. Telecom wire, primarily used in computers with silver lining inside.



46. LOW GRADE

- a. Wire with low copper content.



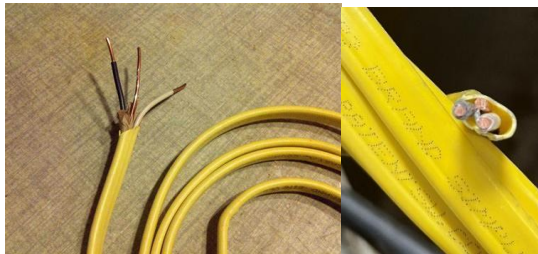
47. THHN 77-80% #1

- a. Copper wire with outside insulation. Copper must be shiny in appearance on the outside; containing no tin.



48. ROMEX 62-65% #1 (copper)

- a. Several strands of insulated copper wire contained in a larger bundle of insulation, usually three prongs.



49. AL BX (aluminum bx cable)

- a. Electric cable commonly utilized in residential applications. Copper wire insulated covered with an aluminum jacket.



MISCELANEOUS

50. PEWTER

- a. Metal alloy consisting of tin, antimony, copper, bismuth and sometimes silver commonly found in decorative objects, jewelry, plates, cups and utensils.



51. PLUG ENDS

- a. Three-pronged wire plugs for outlets.



52. AC UNITS

- a. Window mounted air conditioning units.



53. COMPUTER BOARDS H/GF

- a. Computer boards.



54. LEAD

- a. Lead scrap metal, usually grayish blue in appearance.



55. TUNGSTEN CARBIDE

- a. Typically found as drill bits and inserts. Have a blue hue, are heavy compared to their size, and do not hold their weight on a magnet. Can have a gold appearance, which is a titanium coating.



MOTORS

56. SEALED UNIT

- a. Air condensers, usually found in AC units and fridges



57. E/M SMALL/LG/DIRTY/XTRA DIRTY (electric motors; small, large, dirty, extra dirty)

- a. Electric motors



